

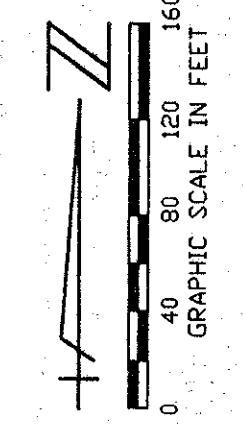
ADDISON RESERVE PLAT THREE

230-020

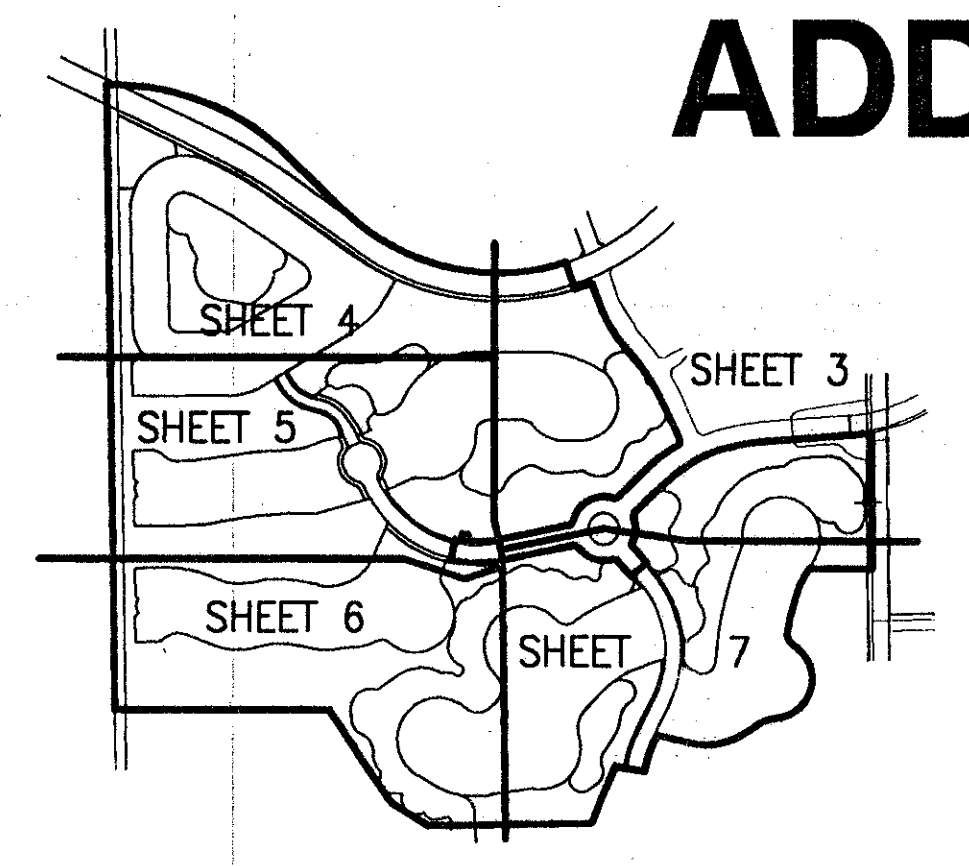
7

PART OF GLENEAGLES/POLO CLUB WEST P.U.D.
 SITUATE IN SECTIONS 21 & 28, TOWNSHIP 46 SOUTH, RANGE 42 EAST
 AND BEING A PORTION OF "THE PALM BEACH FARMS COMPANY
 PLAT NO. 1" (P.B. 2, PGS. 26-28)
 PALM BEACH COUNTY, FLORIDA
 APRIL, 1996 SHEET 3 OF 8

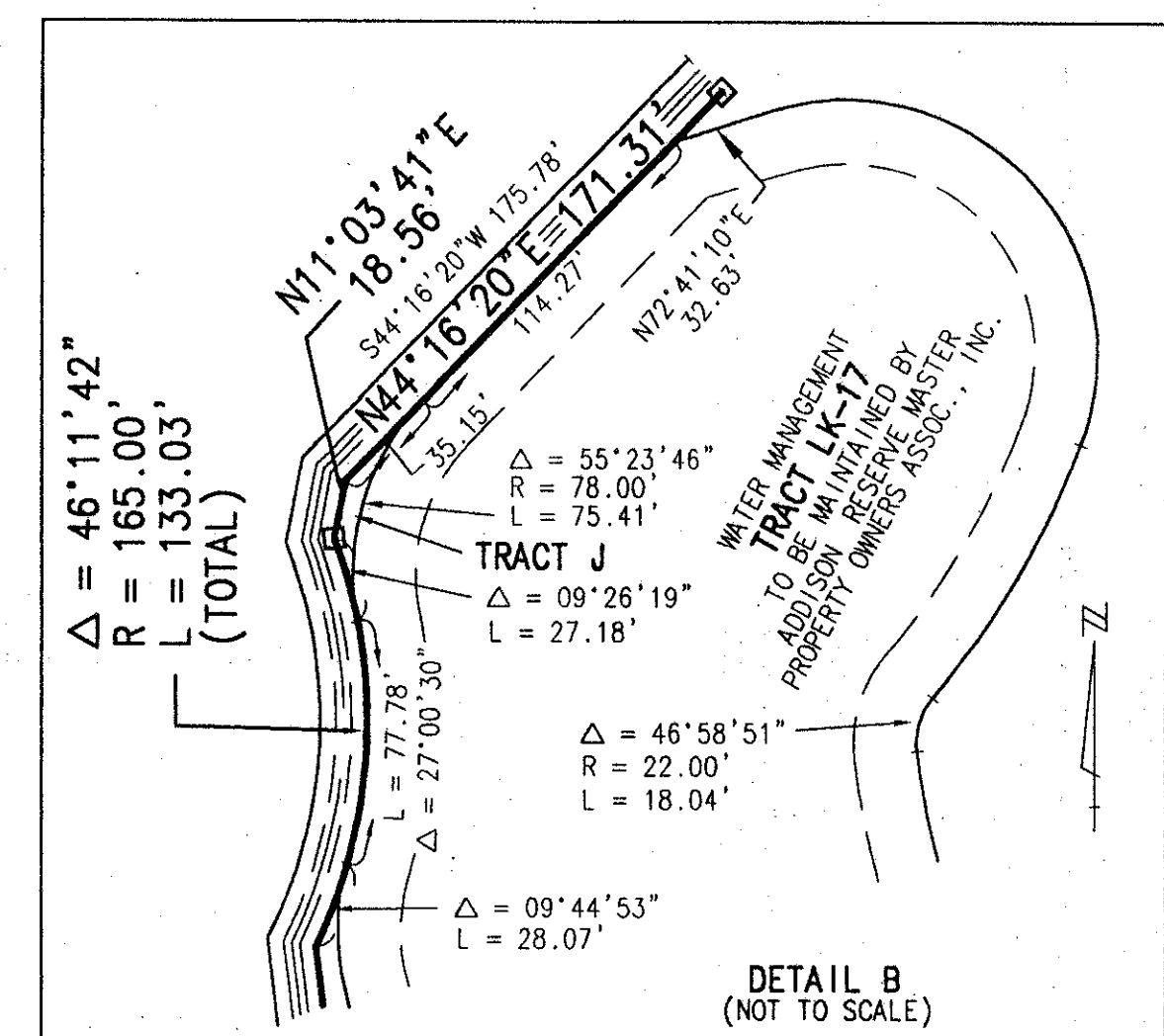
STATE OF FLORIDA
 COUNTY OF PALM BEACH
 THIS PLAT WAS FILED FOR
 RECORD _____ DAY OF _____
 AD, 1996 AND DULY RECORDED
 IN PLAT BOOK _____ ON PAGES
 _____ AND _____
 DOROTHY H. WILKEN, CLERK
 BY: _____ D.C.



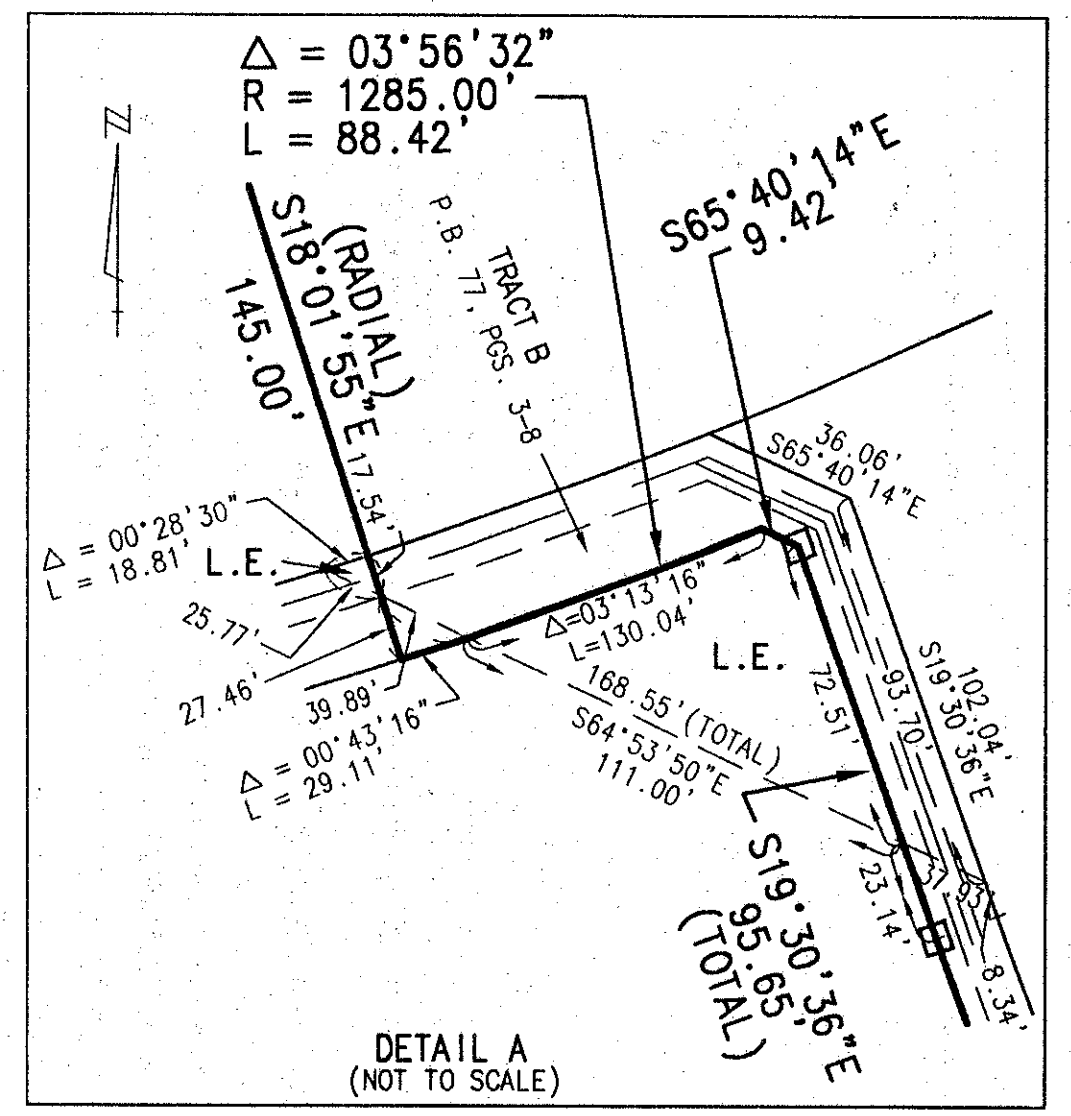
CIRCUIT COURT SEAL



SHEET LOCATION MAP
 NOT TO SCALE



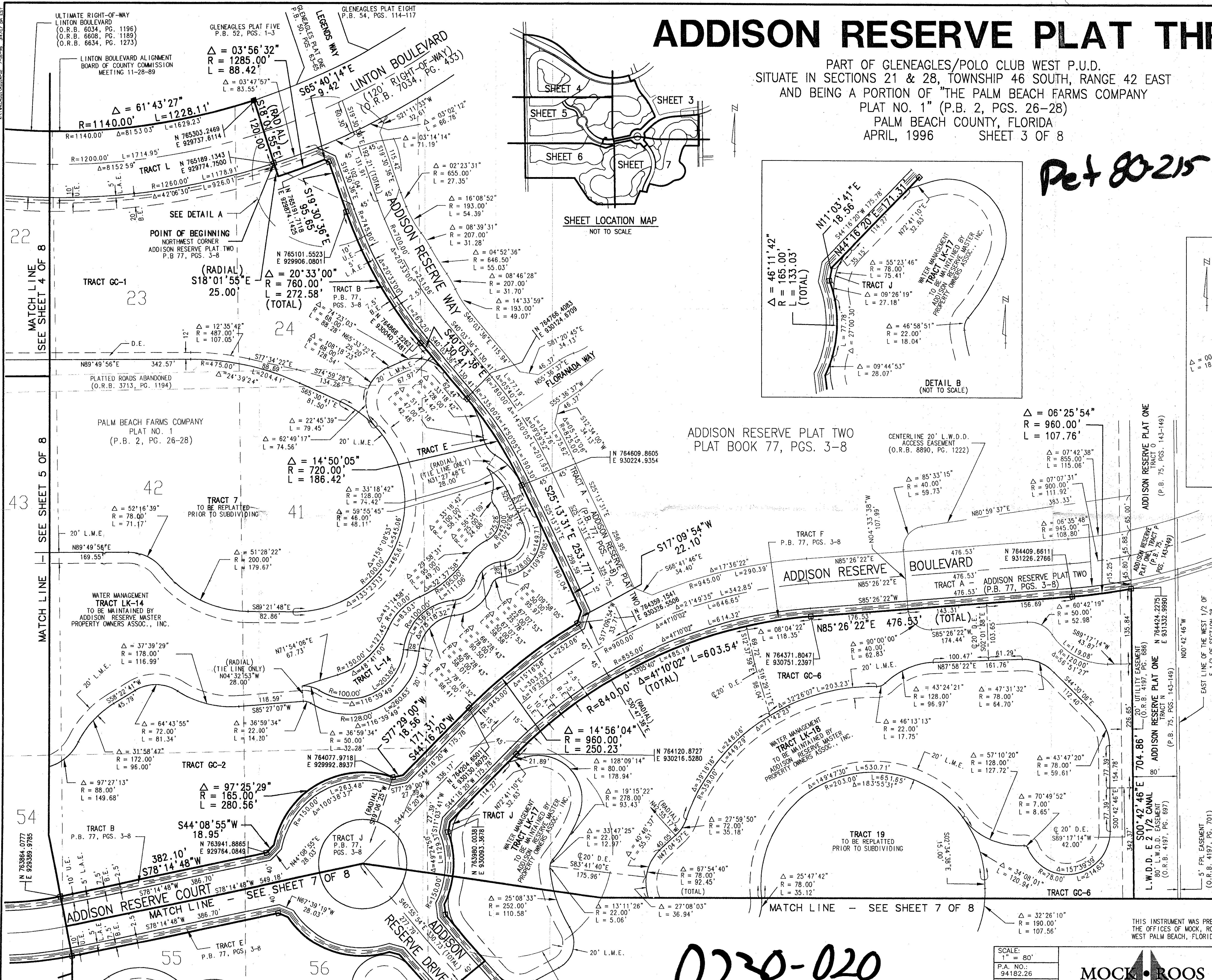
DETAIL B
 (NOT TO SCALE)



DETAIL A
 (NOT TO SCALE)

NOTE:
 REFER TO SHEET 8 OF 8 FOR EASEMENT TO BE
 EXTINGUISHED BY THE FILING OF THIS PLAT.

78/7



SUBDIVISION Addison Reserve
 BOOK 78
 FLOOD ZONE 25A
 ZONING R2S
 QUAD 078
 SE 80-215
 ZIP CODE 33444
 PUD NAME Glenageles Polo Club West

RECORDED
 11/2/94

SCALE:	1" = 80'
P.A. NO.:	94182.26
DATE:	APRIL 1996
DRAWING NO.:	46-42-28-77

MOCK ROOS
 ENGINEERS SURVEYORS PLANNERS
 5720 Corporate Way, West Palm Beach, Florida 33407
 (407) 683-3113, fax 478-7248

ADDISON RESERVE
 PLAT THREE
 PART OF GLENEAGLES/POLO CLUB WEST P.U.D.
 SITUATE IN SECTIONS 21 & 28, TOWNSHIP 46 SOUTH, RANGE 42 EAST
 AND BEING A PORTION OF "THE PALM BEACH FARMS COMPANY
 PLAT NO. 1" (P.B. 2, PGS. 26-28)
 PALM BEACH COUNTY, FLORIDA

0230-020

REV. 06/14/96
 CAD FILE: TWKADDIRP02

SHEET 3 OF 8